

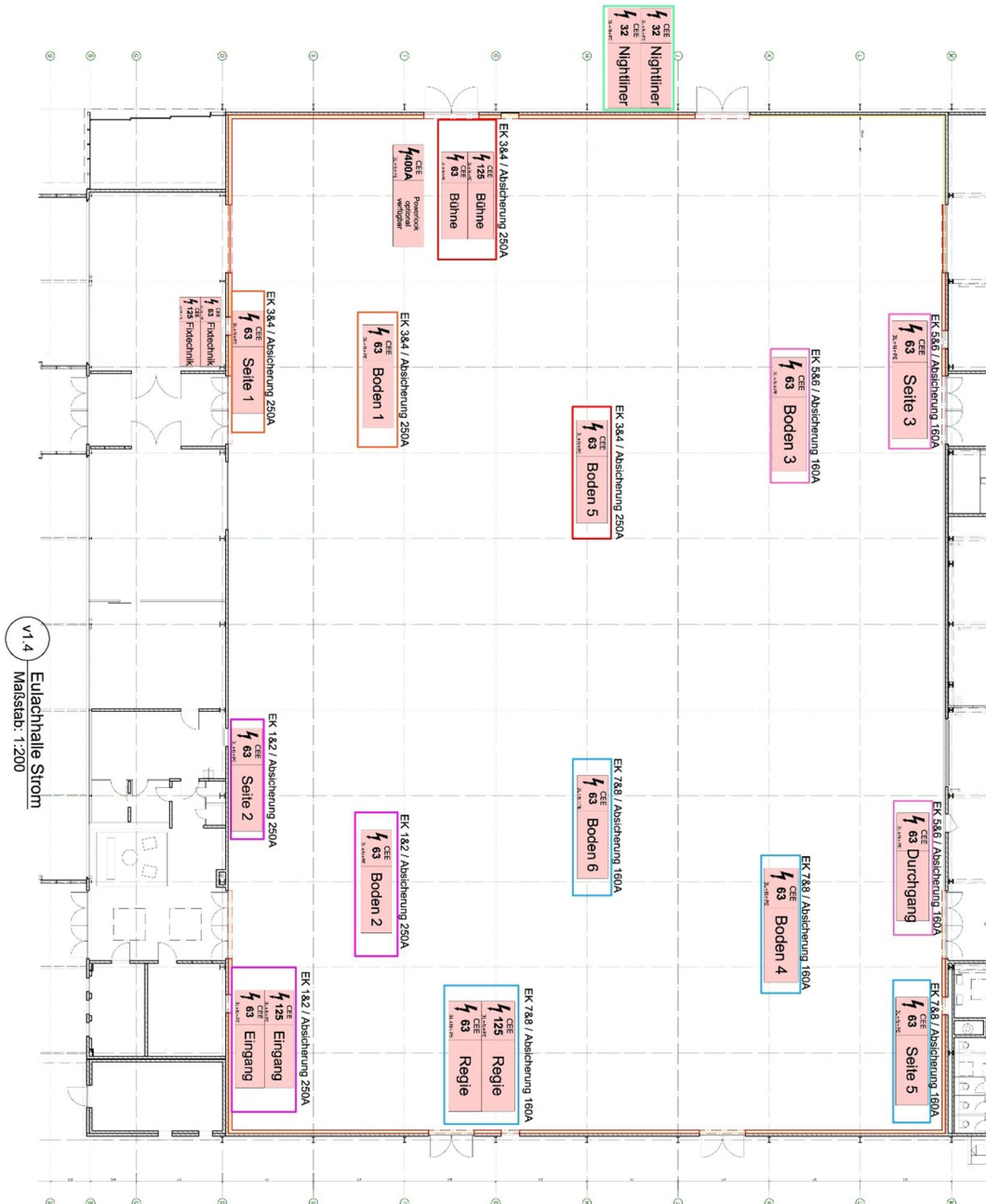
Venue Infos Eulachhalle 1

INFOS

| | |
|-------------------|------------------------------------------------------------------------------------------------------------------------------------------------------|
| Masse Halle | 59m x 41m |
| Höhe Hallen Mitte | 11.46m |
| Höhe Hallen Seite | 7.88m |
| Bühne | diverse Grössen möglich, Standard Gross 10m breit, 7m tief, 1m hoch |
| Strom | Bühne: 1x CEE125, 1x CEE63, Powerlock 400A optional verfügbar Raum: 13x CEE63, 2x CEE125 (Anschlusssicherungen gemäss Plan beachten) |

STROM

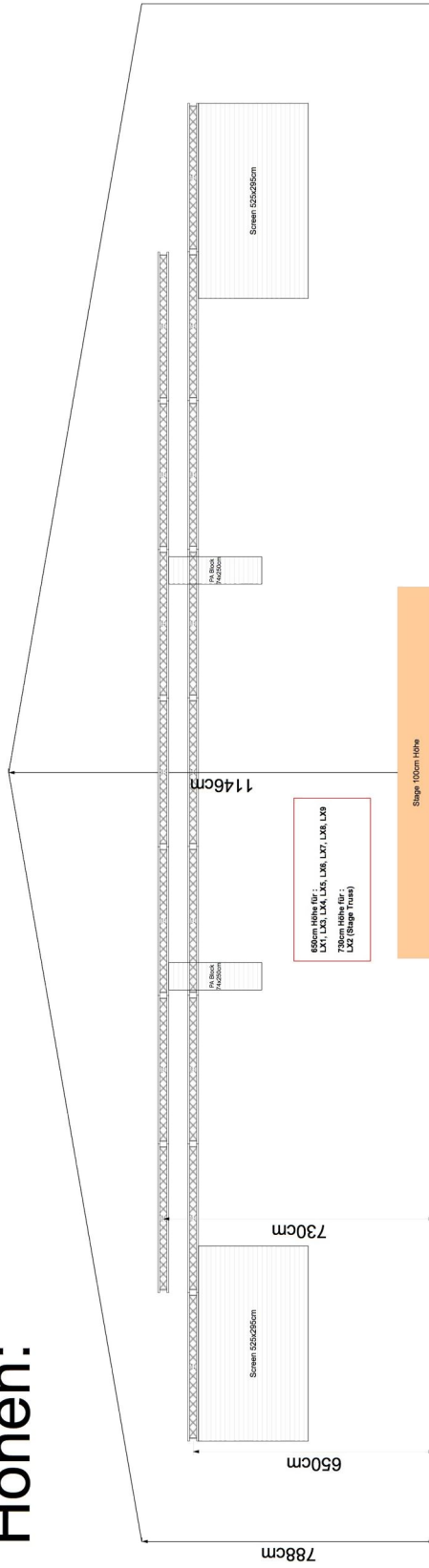
CEE Anschlüsse Halle 1



RIGGING

| <u>Bezeichnung</u> | <u>Motoren</u> | <u>Truss</u> |
|--------------------------------------------|-----------------------------|-----------------------------------------------------------------|
| LX 1 – für Backdrop | 4x Liftket EKZ D8+ 160kg | 36m Eurotruss FD33 black |
| LX 2 – für Bühne | 10x Liftket EKZ D8+ 500kg | 2x 27m Eurotruss HD34 black Verbindung 4x T, 2x 4m, 2x 0.29m |
| LX 3 – Fronttruss | 2x Liftket EKZ D8+ 500kg | 12m Eurotruss HD34 black |
| LX 4 bis LX 9 | je 4x Liftket EKZ D8+ 500kg | je 36m Eurotruss HD34 black |
| Roomtruss | | |
| Steuerung via Chainmaster CM-801/ 16 Kanal | | |

Höhen:



AUDIO

| | |
|----------------|--------------------------------------------------------------------------------------------------------|
| Main PA | 1 6x L'Acoustics KARA, 6x L'Acoustics SB18 geflogen, 8x L'Acoustics KS21 |
| Outfill | 2x L'Acoustics X12 |
| Center | 2x L'Acoustics A10 Wide |
| Nearfill | 4x L'Acoustics X8 |
| Delay | 6x L'Acoustics A15 Focus, 3x L'Acoustics A15 Wide |
| Monitoring fix | 2x L'Acoustics X12 |
| Amping | 12x L'Acoustics LA4X |
| Controlling | 1x Yamaha QL1, 1x Yamaha Rio 1608-D2 |
| Mikrofone | 8x Funkstrecke Shure ULX-D, wahlweise mit Beat 58 Kapsel (4x) oder DPA 4066 Headset & Bodypack (6x) |

LICHT

| | |
|------------------|--------------------------------------------------------------------------------------------|
| Grundlicht Halle | 64x RGBW Fluter Cameo Zenit W300 mit Torblende und Snap Filter |
| Showlicht | 8x Moving Light Wash Robe Robin 600+ 8x Moving Light Spot JB-lighting Varyscan P7 |
| Bühnenlicht | 6x ProLights Eclipse HD2 LED Profiler 25°-50° Optik 6x ProLights Eclipse TU LED Fresnel |
| Hazer | 1x MDG Atmosphere ATMe Case |
| Floor Lights | 16x Astera AX7 Spotlight 60W LED RGBW |
| Controlling | 1x MA Lighting Grand MA3 compact, Luminex Node & Splitter |

VIDEO

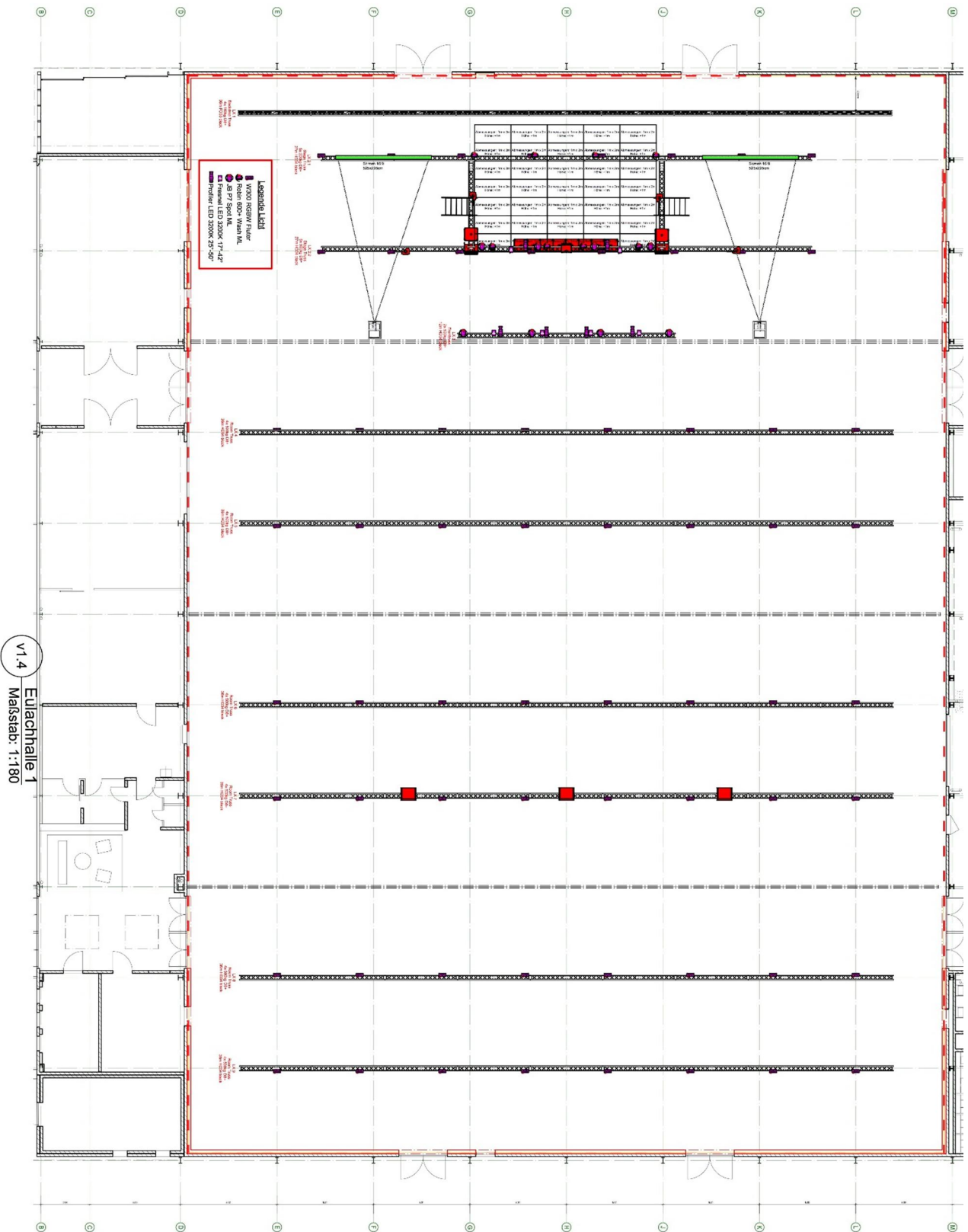
Projektor 2x Panasonic PT-RZ120BE inkl. EVO Frame P10 & TH-Short-60-6 Halter

Objektiv 2x Panasonic ET-DLE105

Projektoren fix installiert an Primärträger

Leinwände 2x Motorleinwand Oray No Limits 16:9, 525x295cm (LX2.1)

Controlling 1x Analog Way Pulse 2, Lightware DA4-3GSDI incl. Rackshelf



LEGENDE

| | | |
|---------------|-------------------|-------------------------------------------------------------------------------------------------------------|
| LX 1 | Rigging: | 36lfm FD33 black / 4x Motor 160kg D8+ Nur für Backdrop / Last verteilt max. 200kg |
| LX 2.1 | Rigging: | 27lfm HD34 black / 5x Motor 500kg D8+ |
| | Licht: | 8x Zenit W300 RGBW Fluter, 4x Robe Robin 600+ Wash ML |
| | Video: | 2x Motorleinwand 16:9, 525x295cm |
| | Freie Anschlüsse: | Strom 2x T13 / 1x DMX Linie |
| LX 2.2 | Rigging: | 27lfm HD34 black / 5x Motor 500kg D8+ |
| | Licht: | 8x Zenit W300 RGBW Fluter, 4x Robe Robin 600+ Wash ML, 4x JB P7 Spot ML, 2x LED Profiler, 2x LED Fresnel |
| | Audio: | Main L'Acoustics 16x KARA, 6x SB18, 2x Outfill X12, 2x Monitor X12 (an Verbindung LX 2.1 zu 2.2) |
| | Freie Anschlüsse: | Strom 6x T13 / 1x DMX Linie |
| LX 3 | Rigging: | 12lfm HD34 black / 2x Motor 500kg D8+ (Max Last 350kg pro Punkt) |
| | Licht: | 4x JB P7 Spot ML, 4x LED Profiler, 4x LED Fresnel |
| | Video: | 2x Panasonic PT-RZ120BE inkl. Frame (fix installiert an Hallenträger) |
| | Freie Anschlüsse: | Strom 2x T13 / 1x DMX Linie / 1x HD-SDI |
| LX 4 | Rigging: | 36lfm HD34 black / 4x Motor 500kg D8+ |
| | Licht: | 8x Zenit W300 RGBW Fluter |
| | Freie Anschlüsse: | Strom 4x T13 / 1x DMX Linie |
| LX 5 | Rigging: | 36lfm HD34 black / 4x Motor 500kg D8+ |
| | Licht: | 8x Zenit W300 RGBW Fluter |
| | Freie Anschlüsse: | Strom 4x T13 / 1x DMX Linie |
| LX 6 | Rigging: | 36lfm HD34 black / 4x Motor 500kg D8+ |
| | Licht: | 8x Zenit W300 RGBW Fluter |
| | Freie Anschlüsse: | Strom 4x T13 / 1x DMX Linie |

LEGENDE

| | | |
|-------------|-------------------|---------------------------------------------|
| LX 7 | Rigging: | 36lfm HD34 black / 4x Motor 500kg D8+ |
| | Licht: | 8x Zenit W300 RGBW Fluter |
| | Audio: | Delay L'Acoustics 6x A15 Focus, 3x A15 Wide |
| | Freie Anschlüsse: | Strom 4x T13 / 1x DMX Linie / 2x HD-SDI |
| LX 8 | Rigging: | 36lfm HD34 black / 4x Motor 500kg D8+ |
| | Licht: | 8x Zenit W300 RGBW Fluter |
| | Freie Anschlüsse: | Strom 4x T13 / 1x DMX Linie |
| LX 9 | Rigging: | 36lfm HD34 black / 4x Motor 500kg D8+ |
| | Licht: | 8x Zenit W300 RGBW Fluter |
| | Freie Anschlüsse: | Strom 4x T13 / 1x DMX Linie |

